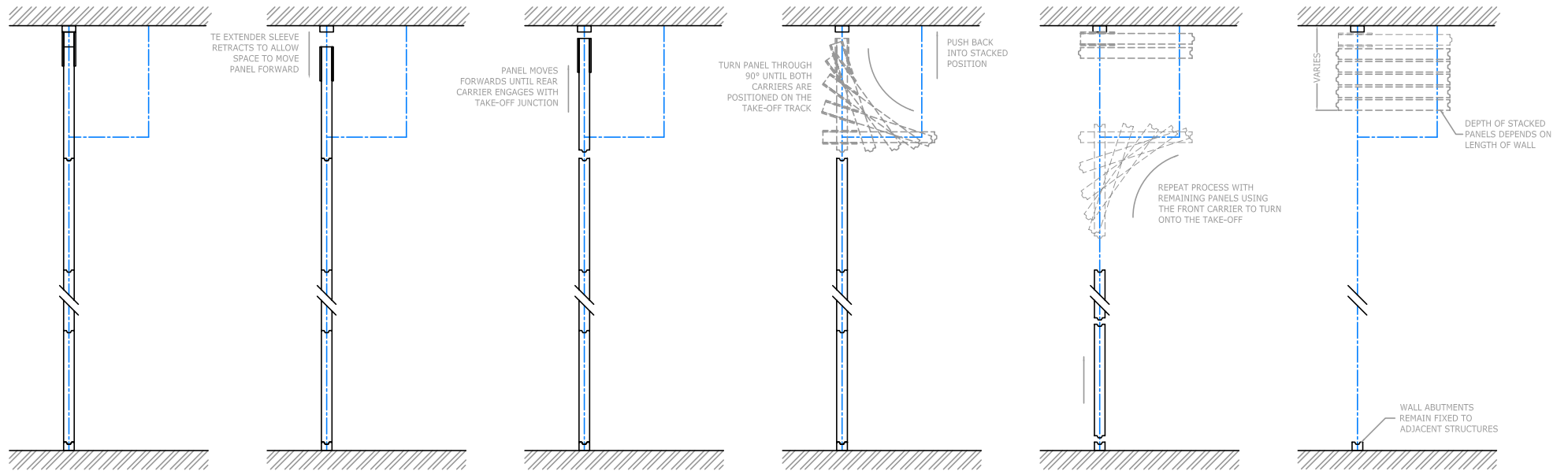


P1 TYPE STACKING - SINGLE POINT SUSPENSION (ONE CARRIER)

P1 TYPE - OPTIONAL STACKING



P2 TYPE STACKING - DOUBLE POINT SUSPENSION (TWO CARRIERS)

- NOTES:**
1. PARKING LAYOUT PL1 (SINGLE POINT SUSPENSION) ONLY POSSIBLE WITHIN THE OPENING (EITHER ONE END OR BOTH ENDS)
 2. A 20mm TRACK DOWNSTAND IS REQUIRED FOR SINGLE POINT SUSPENSION SYSTEMS - SEE STY-SD-02 FOR DETAILS
 3. FLUSH TRACK ONLY POSSIBLE WITH 2-POINT SUSPENSION SYSTEMS - SEE STY-SD-02 FOR DETAILS
 4. OTHER SOLUTIONS ARE AVAILABLE - PLEASE CONTACT STYLE FOR DETAILS
- PLEASE SEE OUR WEBSITE FOR FURTHER DETAILS - www.style-partitions.co.uk

TITLE: STACKING / PANEL MOVEMENT DETAILS

DWG No: STY-SD-01-02

DATE: 27.04.2012

REV: -

style
moveable partition specialists