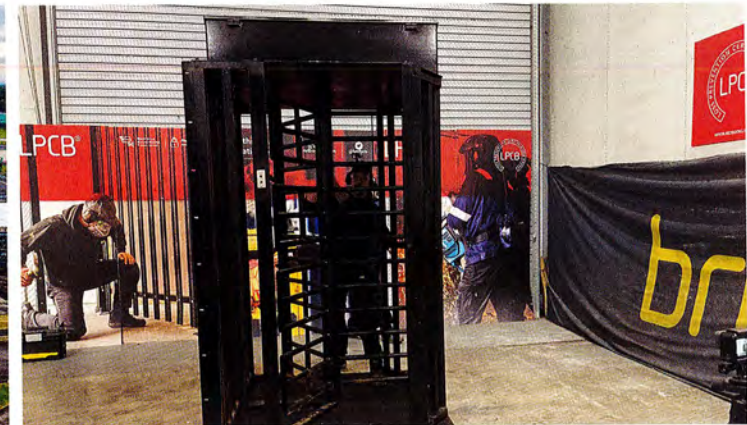
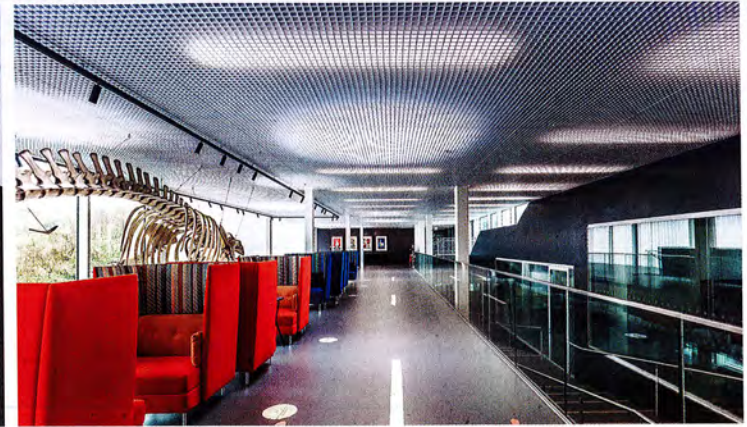


SPECIFICATION

PRODUCT UPDATE

visit our blog:
www.specificationproductupdate.com





Advanced

£92 Million Student Accommodation Project Receives Advanced Protection

Five new towers at the University of Brighton's Moulsecomb Campus are now protected by a fault-tolerant network of MxPro 5 fire panels from global fire systems leader, Advanced.

The 13 networked MxPro 5 panels have been installed to protect the five student accommodation towers varying between eight and 18 storeys, which will provide more than 800 student bedrooms as well as ground-floor fitness facilities and amenities for the students' union.

Responsible for the fire system design, supply and commissioning were West Sussex-based Southern Fire Alarms (SFA) Ltd, who also installed the equipment alongside mechanical and electrical engineers, J&B Hopkins. The fire system is integrated with multiple third-party interfaces, including Automatic Opening Vents (AOVs), sprinklers and access control.

Careful consideration was given to the complex cause and effect programming that needed to be applied across the site. Each building is configured with a six-minute investigation period, with sounders on the floor of origin initiated after a single device activation. A single subsequent device activation will escalate into full evacuation of the specific tower. A master key switch has also been introduced, to allow for full evacuation of all towers if required.

MxPro 5 is the fire industry's leading multiprotocol fire system solution, certified by FM Approvals to the EN 54 standard. It offers customers a choice of four detector protocols and a completely open installer network, backed up by free training and support. MxPro 5 panels can be used in single-loop, single-panel format, or easily configured into high-speed networks of up to 200 panels covering huge areas. Ease of installation and configuration, as well as a wide range of peripheral, make MxPro 5 suitable for almost any application.

Advanced, owned by FTSE 100 company Halma PLC, protects a wide range of prestigious and high-profile educational facilities across the globe – from Scotland's University of Edinburgh and Serbia's University of Belgrade to Myanmar's British International School. Advanced is a world leader in the development and manufacture of fire protection solutions. Advanced's reputation for performance, quality and ease of use sees its products specified in locations around the world, from single-panel installations to large, multi-site networks. Advanced's products include complete fire detection systems, multiprotocol fire panels, extinguishing control, fire paging, false alarm management and reduction solutions as well as emergency lighting. Halma is a global group of life-saving technology companies with a clear purpose to grow a safer, cleaner, healthier future for everyone, every day.

The Bridges, Balliol Business Park, Newcastle upon Tyne
NE12 8EW T: 0345 894 7000

uk.advancedco.com

ENQUIRY 98



Sika

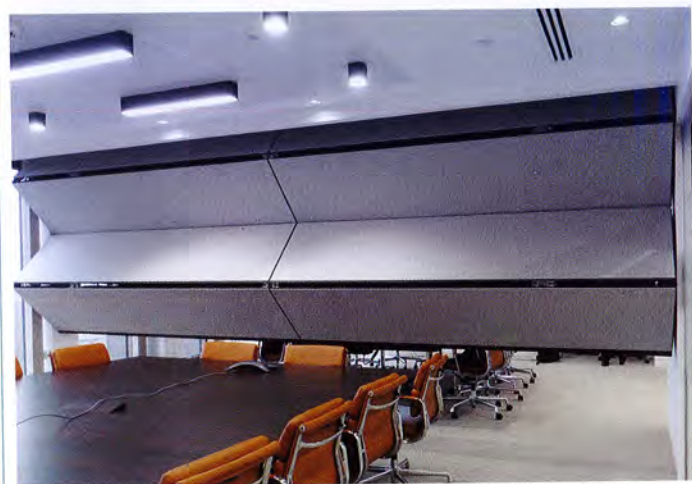
Safe and sound with Sika's fire-resistant sealant

For passive fire protection with added peace of mind, Sika's Sikacryl® -621 acrylic sealant combines exceptional fire-resistance with the added benefit of providing acoustic insulation. The phthalate-free Sikacryl-621 acrylic sealant is incredibly flexible and can offer up to 4 hours of fire resistance, helping to limit the spread of fire, heat and smoke through walls and floors disrupted by linear and penetrative joints and seals. By providing a robust seal, the product can also help with soundproofing requirements and dries to a smooth finish which can easily be painted over. It has been designed to work individually or alongside other products within Sika's extensive passive fire protection range.

Sika Limited, Watchmead, Welwyn Garden City, Hertfordshire
AL7 1BQ T: 01707 394444

www.sika.co.uk/passivefire

ENQUIRY 99



Style Partitions

Green fabric for Skyfold vertical-rising partition

Style Partitions is offering a new range of recycled fabric finishes thanks to its exclusive UK partnership with Skyfold. This fully automatic, vertical-rising partitioning system is now available with either a Marin 1300 or Resolve 1301 fabric finish, both of which use between 90-100%, post-consumer recycled polyester. Complementing any interior décor, the sustainable fabric is available in a wide range of contemporary colourways. With environmental impact being a critical aspect of any development, this green initiative is yet another huge leap forward in Style's ability to offer the most sustainable moveable wall solutions in the UK. Many years ago, Style was the first supplier to secure a UK Environmental Product Declaration (EPD) certification for moveable walls.

28 Leonard Street, London, EC2A 4BY
T: 020 3752 3838 E: london@style-partitions.co.uk

www.style-partitions.co.uk

ENQUIRY 100